

# **LC-MS-1000**

## **Liquid Chromatograph Mass Spectrometer**



# LC-MS-1000

Liquid Chromatograph - Mass Spectrometer 1000

LC-MS 1000 -- High performance-to-price ratio



## Cost-effective LC-MS solution with top performance:



LC-MS 1000 is the first commercial LC-MS system designed by domestic instrument Company in instrument market. Its Performance meets the requirement of national standards for LC-MS and for determination of chemicals in food and environment. We use imported parts such as turbo pumps and detectors to improve performance and detection stability. LC-MS 1000 has high performance/cost ratio. Since

Analytical makes most consumables. We can guarantee our customers the lowest maintenance cost in daily use.

### Highlights:

#### 01 Unique ion source design

- The sample capillary Position is adjustable in order to get maximum ion signal for different samples.
- Patented heating technology and nebulizer gas technology help increase vaporization efficiency which reduces background noise and increase sensitivity.
- Folder-line shape gas exit in ion source Helps vacuum nozzle clean and reduce contamination effects That is also very helpful to maximum ion transfer efficiency so that we can get maximum sensitivity.

#### 02 Multi-channel acquisition function increases analysis and working efficiency:

- Full scan mode could be used to find and qualitatively analyze target molecule in your sample. Selected ion monitoring mode (SIM mode) could be used to quantitatively analyze your target molecule.
- SIM mode is often used to analyze low concentration or low ionization efficiency samples since its higher detection ability. in the mean while. Full scan mode is often used to analyze higher concentration or high ion efficiency unknown sample.
- The multi-channel acquisition mode, selective ion monitoring (SIM) and/or full scan mode are for choice, or all used during one operation, which greatly improves analysis speed and working efficiency.



#### 03 Quick switch between positive and negative ionization modes:

Quick switch between positive and negative modes minimizes effect on chromatograph spectra during the for compounds. which can be ionized in both modes (Positive/Negative), Positive spectrum and negativ spectrum in one scan make results more reliable.

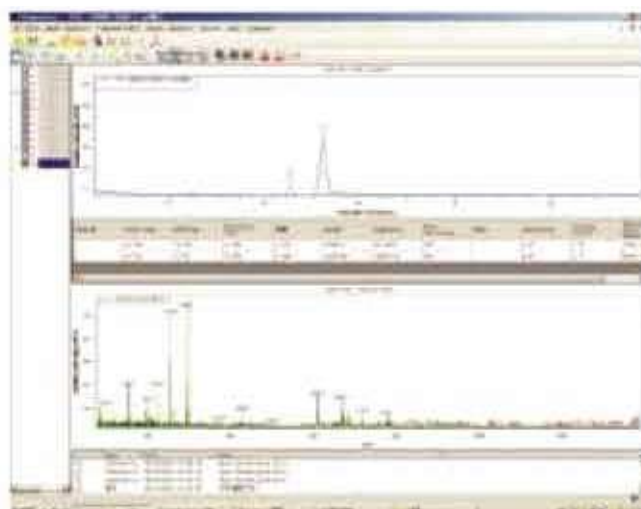


#### 04 Obtain abundant MS information in one sample (including molecular weight and several structures Information):

In-source collision induced dissociation (CID) function with more fragment structure information, facilitate the mass spectrogram analysis of target compound.

#### 04 Dual language interfaces. sample operation and powerful software functions.

Powerful LC.MS chemical workstation software (ChemAnalyst) simplefiles all operation procedures from tuning to method set, sampling to qualitative and quantitative data analysis. Advanced networking function enables you to remote control instrument and view test results



#### Specifications:

Mass range: m/z 10-1500 amu

Resolution: unit resolution (FWHM<0.7amu)

Mass accuracy :±0.20 amu (in the mass calibration range of scan mode)

Mass axis stability: ±0.2amu/12h (under constant temp. of ± 2°C)

Scanning rate: standard mode: 1000amu/s, fast scan mode: 10000aum/s

SIM signal to noise ratio: ESI, 200ul/min, SIM

Positive ion mode: 10pg reserpine,

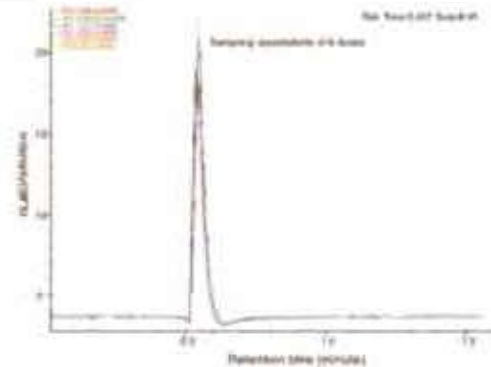
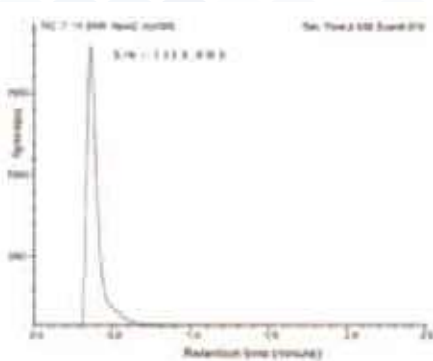
Positive ion mode: 10pg chloramphenicol, S/N≥20:1 (RMS)

Peakarea repeatability: RSD≤ 4.6%

Retention time repeatability: RSD≤ 1.5%

**Your Trustworthy Data!**

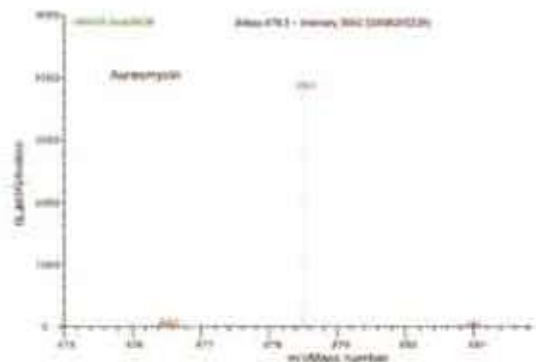
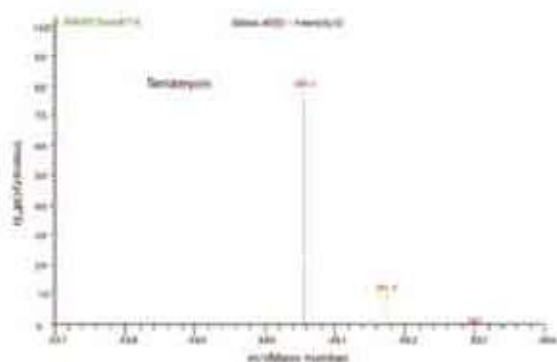
**Pg level sensitivity and stable repeatability**



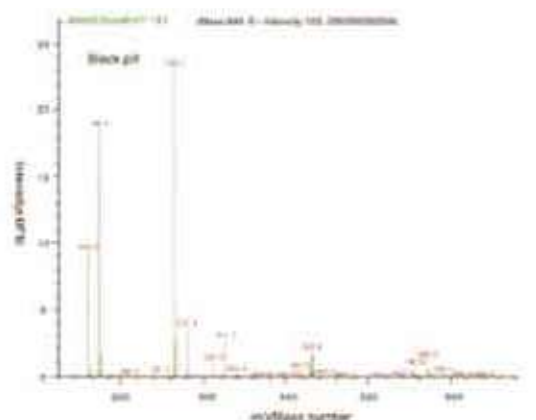
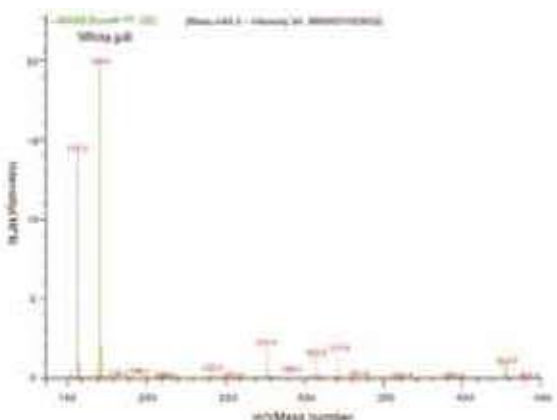
### Application Field:

Single quadrupole type LC/MS is widely applied in industries like pharmaceutical industry environmental monitoring, food safety and chemical industry, etc.

### Sample application:



### B. Bufferin

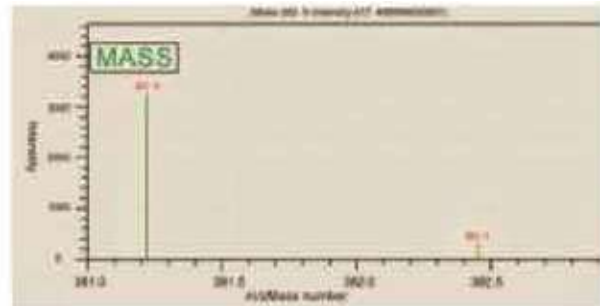
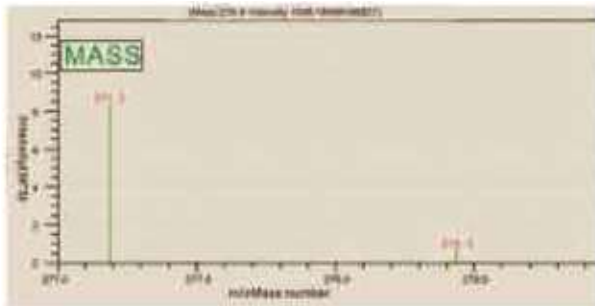




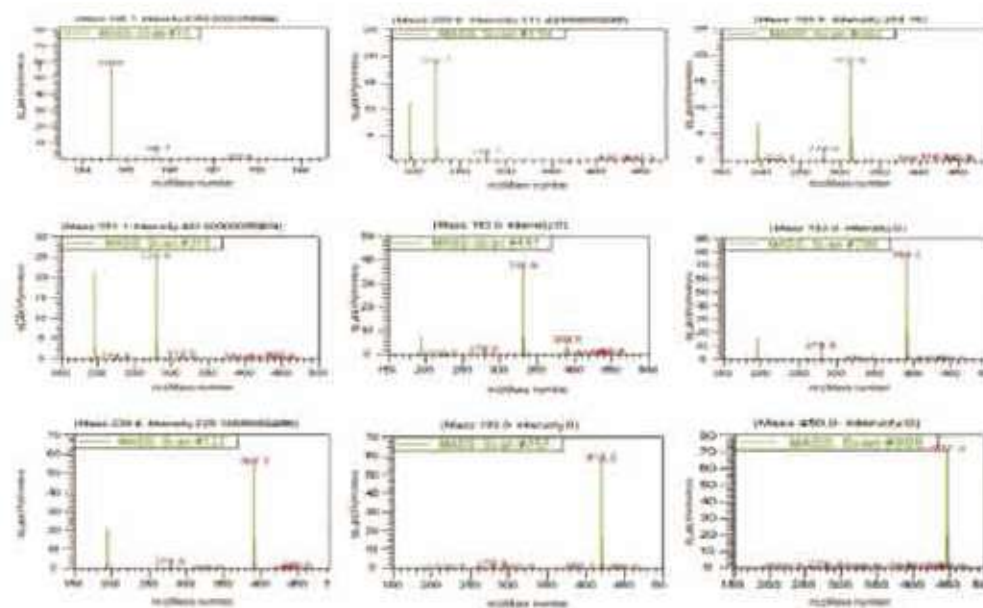
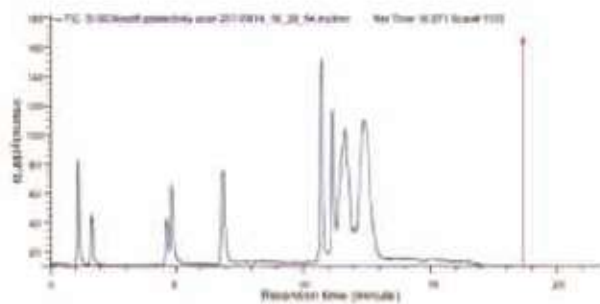




Your trustworthy Data!

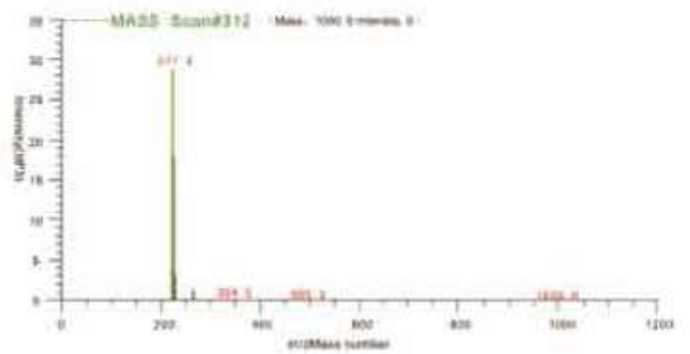
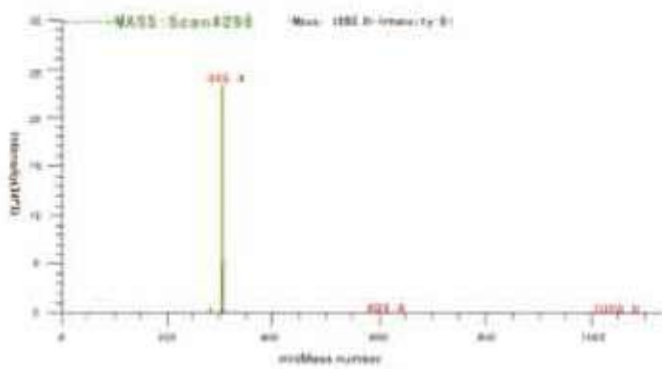
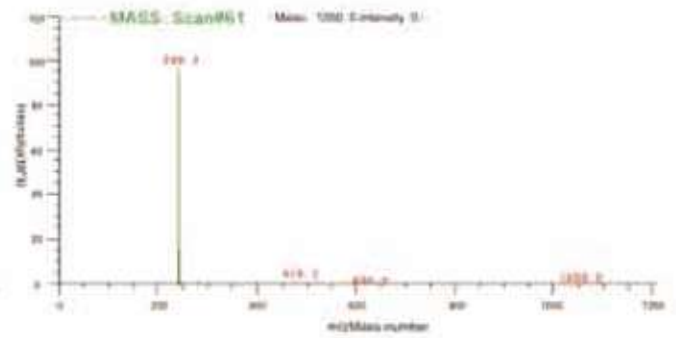
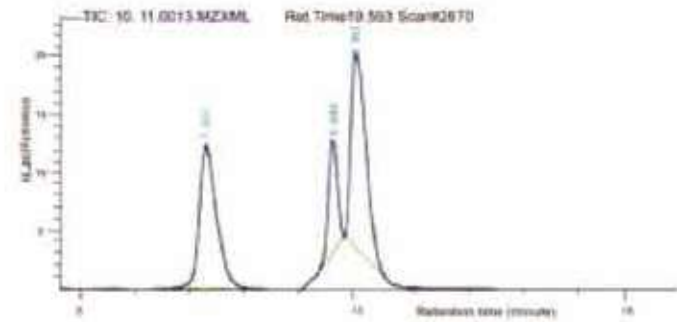


Phthalic acid estr (PAE, including DMP, DEP, BBP, DCHP, DEHP, DNOP, DIDP) in food safety



## B. Pesticide residues in food

Ractopamine, Clenbuterol Hydrochloride, Salbutamol in meat.



## ►►► Regulatory compliances



## ►►► Corporate Social Responsibility

Analytical Foundation is a Nonprofit Organization (NGO) found for the purpose of:



**Analytical**  
**Foundation**

1. Research & Innovation Scientist's awards / QC Professional Award: Quality life is possible by innovation only and the innovation is possible by research only, hence ANALYTICAL FOUNDATION is committed to identify such personalities for their contributions across various field of Science and Technology and awarding them yearly. To participate for award, send us your details of research / testing / publication at [info@analyticalfoundation.org](mailto:info@analyticalfoundation.org)

2. Improving quality of life by offering YOGA Training courses, Work shops / Seminars etc.

3. ANALYTICAL FOUNDATION aims to DETOXYFY human minds, souls and body by means of Yoga, Meditation, Ayurveda, Health Care, Awards, Media, Events, Camps etc.

## ►►► Reach us @



 **Analytical**®  
Technologies Limited

HPLC Solutions   MultipleLabs   Analytical Bio-Med   Analytical Distributors   Analytical Foundation (Trust)

**Corporate & Regd. Office:**  
Analytical House, # E67 & E68,  
Ravi Park, Vasna Road, Baroda,  
Gujarat 390 015. INDIA

T: +91 265 2253620  
+91 265 2252839  
+91 265 2252370  
F: +91 265 2254395

E: [info@hplctechnologies.com](mailto:info@hplctechnologies.com)  
[info@multiplelabs.com](mailto:info@multiplelabs.com)  
[info@analyticalgroup.net](mailto:info@analyticalgroup.net)  
[info@analyticalbiomed.com](mailto:info@analyticalbiomed.com)

W. [www.ais-india.com](http://www.ais-india.com)  
[www.analyticalgroup.net](http://www.analyticalgroup.net)  
[www.hplctechnologies.com](http://www.hplctechnologies.com)  
[www.multiplelabs.com](http://www.multiplelabs.com)

Sales & Support Offices:  
across the country :  
Distributors & Channel  
partners World Wide